

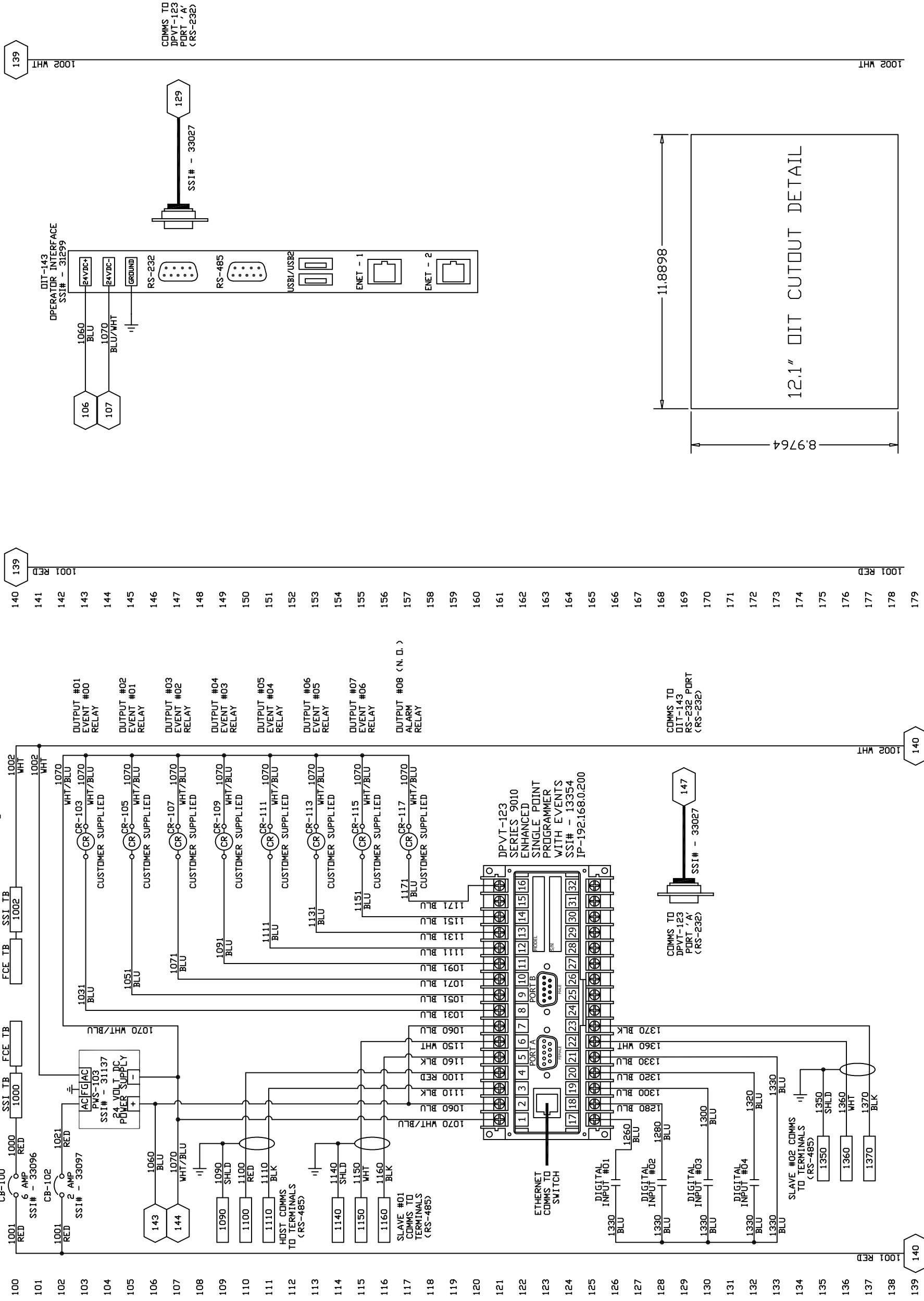
OR □

DENOTES TERMINAL BLOCK

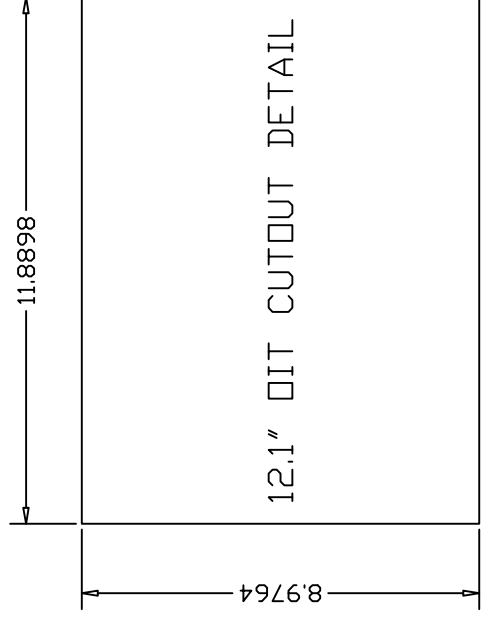
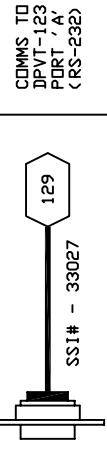
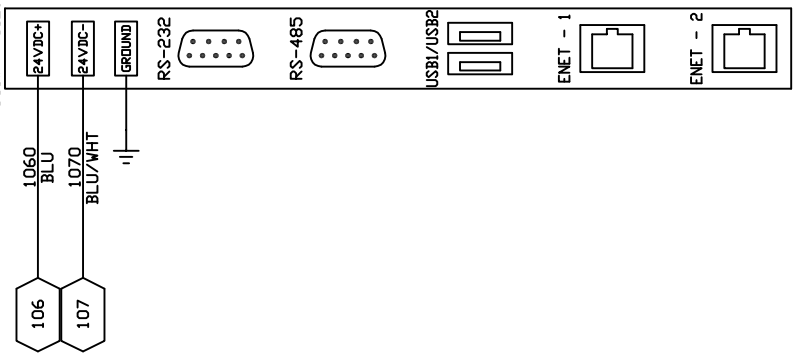
SUPER SYSTEMS INC.
(800) 666-4330
WWW.SUPERSYSTEMS.COM

1 - 24VDC (COM)	22 - SLAVE 2 RS485 (+)
2 - 24VDC (+)	23 - SLAVE 2 RS485 (-)
3 - RS485 RT (+)	24 -
4 - RS485 RT (-)	25 -
5 - SLAVE 1 RS485 (+)	26 -
6 - SLAVE 1 RS485 (-)	27 -
7 - RELAY COMMON	18 - EVENT IN 1
8 - EVENT RELAY 0	19 - EVENT IN 2
9 - EVENT RELAY 1	20 - EVENT IN 3
10 - EVENT RELAY 2	21 - EVENT IN COM
11 - EVENT RELAY 3	32 -

SERIES 9010 PINDOUT LABEL



OPERATOR INTERFACE
SSI# - 31299



REFERENCE DRAWING(S)

THIS DRAWING IS FURNISHED AS A GUIDELINE ONLY. FINAL INSTALLATION DIAGRAMS ARE THE RESPONSIBILITY OF OTHERS.

CONFIDENTIAL

REV.	DESCRIPTION	DRAWN	DATE	APPROVED
A	ECD - 00412	GDG	24 MAR 2017	

SERIES 9010 ENHANCED SINGLE POINT PROGRAMMER WITH EVENTS - RS-232 COMMUNICATIONS TO 12.1" DIT BASIC WIRING DIAGRAM

APPROVALS	DATE	DWG. NO.	REV.
DRAWN	GDG	17 MAR 2014	1.3539
CHECKED	CHKD	DATE	ISSUED
ISSUED	DATE	ISSUED	SCALE
			1:1

SHEET 01 OF 02

UNLESS OTHERWISE SPECIFIED DIMENSIONS ARE IN INCHES FRACTIONS DECIMALS ANGLES X.XX=±0.100 X.XXX=±0.010 X.XXX=±0.001

SSI
CINCINNATI, OHIO