

Series 9220

state of the art multi-loop PID controller, engineered specifically with a focus on vacuum furnace applications

Vacuum Furnace Controller

Series 9220 includes

- Programmable controller (300 24-step programs)
- Expandable load T/C support
- Direct connection to vacuum gauges
- Interfaces with most vacuum controllers
- "Outgas" alarm
- Load T/C alarms
- Recipe driven
- Guarantee on load and control T/C's
- Multiple auto-switching PID's
- Video Recorder

Unique features

- 16 PID's via program "opcode"
- Band limits for each process variable
- Guarantee soak timer based on auxiliary load T/C's (Work/Part T/C)
- Extended I/O via PLC
- User selected PID settings for optimal control
- Overshoot suppression logic
- 3 PID sets per loop used with defined temperature switch point
- Ability to guarantee soak times on vacuum level
- User defined process variable curves for non-standard inputs
- Manage I/O through pre-defined vacuum or temperature set points



Built in Chart Recorder with Notes



Available Screen Sizes:
3.5", 5.7", 12.1"

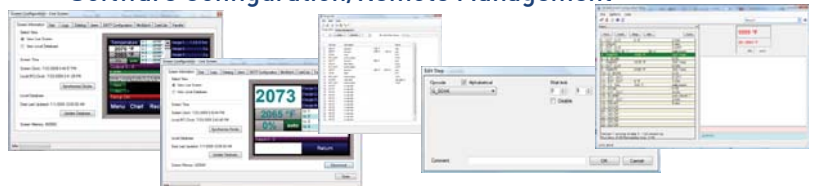
E-mail Alarm Notification



- Alarm log with e-mail capabilities
- Easy to use recipe programmer
- Universal MODBUS communications
- Configurable event management
- Digital data recorder
- Optional batch database for load tracking

TS Manager - Data management for touch screen flashcard. Remote data viewer, historical data backup, SuperDATA integration.

Software Configuration/Remote Management

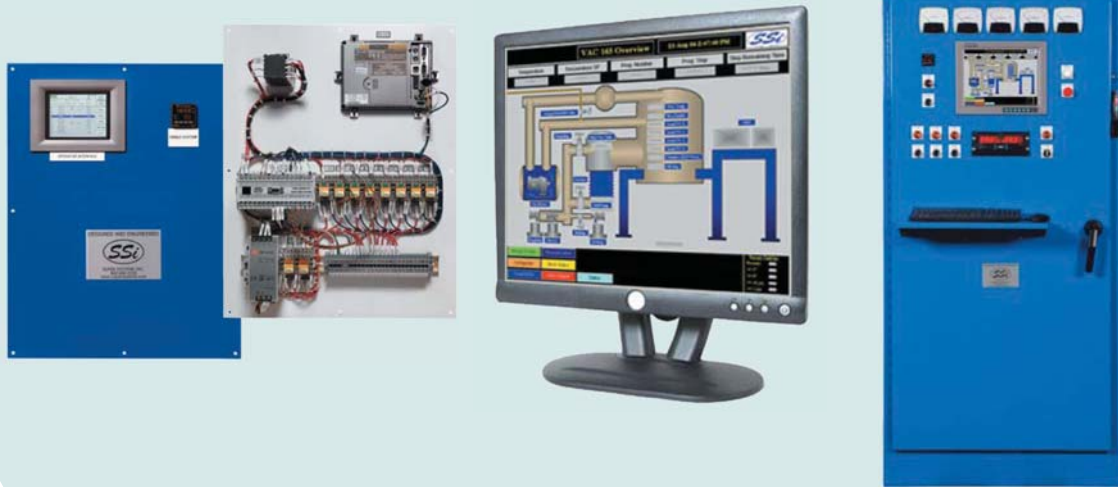


INNOVATIVE SOLUTIONS WORLDWIDE



Super **Systems**
incorporated

Vacuum Control Solutions



Model 5000 shown above
with optional Televac MM200

Used to run complex vacuum processes
with a user-friendly operator interface

Model 9220 Features

Control Loops	Temperature and Vacuum (3 Loops)
Analog Inputs	Three
Analog Outputs	Two (0-20mA or 4-20mA)
Digital Inputs	Four
Digital Outputs	Eight configurable relay outputs
Communication Ports	One - RS232 Three - RS485 ETHERNET
Display	3.5", 5.7", 12.1" Color touch screen Video recorder with "NOTES" Removable storage media PC interface with SuperDATA
Programmable	300 24-step recipes Vacuum specific "opcodes"
Events	User defined
Web Browser Enabled	Remote PC view (standard browser)
Mounting	DIN rail or sub-panel mounting
Power	24VDC (SSi # 31135)



Super Systems
Incorporated

7205 Edington Drive
Cincinnati, OH 45249
513.772.0060 phone
513.772.9466 fax

www.supersystems.com 800.666.4330